

WAY

9

CAPSUBLEND™ by MEDISCA

As compounding industry leaders, we are dedicated to provide the highest quality products and services. Our new conceptual breakthrough CAPSUBLEND™ Excipients demonstrates why our bases are the basis for success.

Vice President: Darian Zaccardo
Founded: 1989
Toll Free Phone: (800) 932-1039
Address: Medisca
 661 Route #3, Unit C
 Plattsburgh, NY 12901
Website: www.medisca.com



Company Background

MEDISCA is an industry leader in the repackaging and distribution of pharmaceutical compounding supplies. We are committed to providing the highest quality Fine Chemicals and Active Pharmaceutical Ingredients (APIs), Bases, Devices, Equipment, Oils, Flavors and Colorings. Our offices are located in Plattsburgh, New York • Las Vegas, Nevada • Irving, Texas. Active throughout the world, our buyers source and secure first quality products conforming to the latest editions of USP, BP, EP and other compendial pharmacopeias. We are dedicated to meeting the highest customer service standards for North American clients. To further meet your needs, Certificates of Analysis (CoFA), Material Safety Data Sheets (MSDS), and Technical Specifications are available for all fine chemicals and APIs online or upon request.

Product Overview

Proven to be the most versatile of dosage forms for over a century, capsules have always played an important role in drug delivery for pharmaceutical applications. However, their preparation has not always been evident and can most often be time consuming. To minimize the headache of excipient selection and blend preparation, while ensuring a higher level of efficacy, MEDISCA has designed a new line of products: CAPSUBLEND™ Excipients. Based on the Biopharmaceutical Classification System (1995), which categorizes drugs mainly according to their solubility amongst other properties, CAPSUBLEND™ Excipients represent a conceptual breakthrough for the compounding industry. Our customized, ready-to-use formulations for poorly soluble, highly soluble, or hygroscopic drugs act as the perfect fillers for immediate-release capsules.

Features and Options

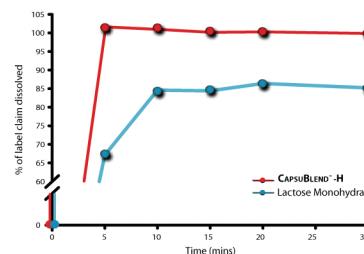
From a dissolution point of view...

To demonstrate the importance of excipient selection and drug compatibility, MEDISCA partnered up with Pharmatest Laboratories, an FDA-registered Pharmaceutical testing laboratory with 25+ years of experience in providing analytical services. A comparative study was established between MEDISCA's new CAPSUBLEND™ Excipients and Lactose Monohydrate. Study results confirmed the effectiveness of the CAPSUBLEND™ Excipients as they depicted enhanced USP compliant drug dissolution profiles:

CAPSUBLEND™-H resists moisture sorption and provides the stability needed for proper efficacy

CAPSUBLEND™-H offered a statistically significantly greater dissolution of Levocarnitine when compared to capsules filled with Lactose Monohydrate with $p < 0.05$. Due to chemical incompatibility and instability between Lactose and Levocarnitine, capsules with Lactose showed a low dissolution efficiency.

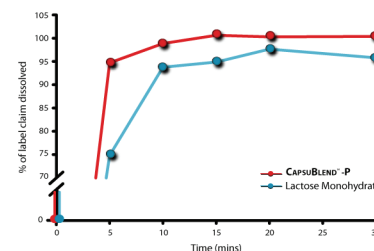
Comparative drug release profiles of Levocarnitine 250mg capsules in CAPSUBLEND™-H versus Lactose Monohydrate



CAPSUBLEND™-P enhances dissolution by improving solubility

This unique premixed blend promotes a faster drug dissolution by improving the solubility of poorly soluble actives such as Theophylline. CAPSUBLEND™-P enabled a superior dissolution of Theophylline when compared to capsules filled with Lactose Monohydrate with $p < 0.05$.

Comparative drug release profiles of Theophylline 100mg capsules in CAPSUBLEND™-P versus Lactose Monohydrate



CAPSUBLEND™-S provides desired disintegration without impeding dissolution

MEDISCA's premixed blend for soluble drugs allowed for an improved dissolution of Metronidazole when compared to the capsules compounded with Lactose Monohydrate as a filler. The difference in performance is statistically significant with $p < 0.05$.

Comparative drug release profiles of Metronidazole 250mg capsules in CAPSUBLEND™-S versus Lactose Monohydrate

